



FLORIDA STATE
UNIVERSITY

COLLEGE of MEDICINE

Regional Campus Review

Orlando

NOVEMBER 2015

INSIDE THIS
ISSUE:

Welcome, Class of 2017!	2
All-Faculty Meeting Highlights	3
Alpha Omega Alpha and Gold Humanism Inductees	4
Student Proposes Legislation for GME	4
Alumni Who Practice in Central Florida	5
Alumni Update with Rob Allison	5
Research News	6

Florida State
University College
of Medicine
Orlando Regional
Campus
250 E Colonials
Drive, Suite 200
Orlando, FL 32801

407-835-4103
med.fsu.edu/orlando

Dean's Message

Formidable FSU Research: Standing on the Shoulders of Our Education Model



Michael J. Muszynski

I often rightly praise our Orlando Campus community faculty as the reason our clinical curriculum has been a spectacular success. Now because of their interest in community-based research, I can say that they are the foundation of our recent major successes in research funding.

Two universities that have been big-time rivals in college sports are now partners in big-time research. Florida State University and the University of Florida Colleges of Medicine have teamed up to win a \$17.5 million National Institutes of Health Clinical Translational Science Award (CTSA). This makes the FSU College of Medicine an official partner with the UF Clinical Translational Science Institute. UF and FSU will be jointly dedicated to translating medical research discoveries more quickly into patient care advancements at the practice level throughout Florida. This means that advancements in care and diagnosis will be brought to the community level in a more comprehensive and timely fashion. Funding from the CTSA will benefit FSU College of Medicine regional campuses with support for Clinical Research Associates. This will expand the workforce of the FSU Clinical Research Network (FSU CRN).

And there's more. Earlier in the process, FSU and UF invited their mutual football rival, the University of Miami, to team up with them to form the OneFlorida Clinical Research Consortium. The consortium combines clinical research efforts

of the three universities and utilizes the resources of the UF-FSU partnership and the FSU CRN. The total number of patients within the reaches of the consortium is staggering, approaching 8-9 million Floridians. In addition, OneFlorida will have a single, central and virtual Institutional Review Board (IRB) to streamline study review, approval and oversight. These combined resources led to OneFlorida winning its own multimillion-dollar grant (\$7.9 million) from the Patient-Centered Outcomes Research Initiative (PCORI) that was established under the Affordable Health Care Act. Our Florida-based PCOR consortium is one of 13 systems nationwide at the forefront of creating a de-identified patient database that will link information from all over the state of Florida and nationally.

As we embark on these exciting ventures, the following lessons come to mind: 1) Major translational research grant applications are more competitive when universities collaborate rather than compete. 2) PCOR brings patients into the research design and decision processes. 3) Big-data PCOR will usher in an era of community-based research with the patients and their doctors as stakeholders. 4) Community physicians are enthusiastic about research participation. 5) The FSU College of Medicine is not only an amazing model of medical education, but also an impressive model of distributed, community-based clinical research that we built upon that model. 6) Creating and building a research network is really difficult—sometimes akin to walking through molasses. 7) There are remarkably gifted community faculty, research staff and leaders working in the FSU College of Medicine Research who made it happen!

Go Noles!

Welcome, Class of 2017!



Avi Assidon
Sunrise, Fla
FSU



Quinton Campbell
Minneapolis
FSU



Rebecca Imran
Miami
UM



William Johnson Jr
Indianalantic, Fla
USF



Mayuri Joshi
Tallahassee
FSU



Dwight Kemp
Miami
FSU



Alexandra Law
Orlando
FSU



Rodolfo Loureiro
Petropolis, Brazil
USF



Jonathan McKenzie
Sarasota
FSU



Edson Mwakyanjala
Saint Cloud, Fla
FSU



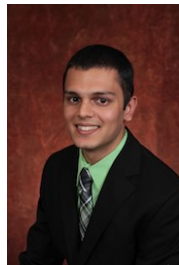
Kaitlin Nicholson
Ponte Vedra, Fla
UCF



William Nimmons
Tallahassee
FSU



Caitlin Parks
Jacksonville
FSU



Chirag Patel
Tallahassee
Emory



Joseph Pepitone
Orlando
UChicago



Rhea Ramjit
Queens, NY
FSU



Zachary Rogozinski
Jacksonville
FSU



Carlos Rubiano
Bogota, Colombia
FGCU



Michelle Silva
Miami
FSU



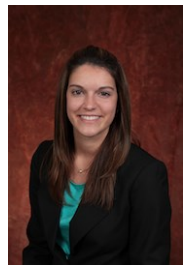
Princess Urbina
Bagac, Bataan,
Philippines
UCF



Travisha Vaughns
Lauderhill, Fla
FSU



Sanaz Vaziri
Miami
UF



Peggy Vogt
Orlando
FSU

The All-Faculty Meeting

Because of You...

The Orlando Campus recently hosted the 2015 All-Faculty Meeting at the Citrus Club, where attendees learned of the Orlando campus successes attributed to the remarkable community faculty. “Because of You” was the theme used as **Dr. Michael Muszynski**, Orlando Campus dean, shared student accomplishments resulting from the commitment and skill of Orlando’s community physician-faculty who teach FSU students. “Because of YOU, the Orlando campus Class of 2015 achieved a remarkably impressive mean score on the USMLE Clinical Knowledge Exam that was well above the national average. Because of YOU, our graduates are returning to Florida to practice at rates twice the national average,” reported Dr. Muszynski.

John P. Fogarty, MD, dean of the Florida State University College of Medicine, presented remarks on “15 Years and Counting: Perspectives of Our Model and the Future of Medical Education.” FSU is serving as a model, and programs are taking notice of the accomplishments of the FSU model, he said. Dean Fogarty thanked the Orlando community faculty for their commitment to FSU students in Orlando.

Dr. Cecil Wilson, past president of the Orange County Medical Society, Florida Medical Association, American Medical Association and World Medical Association, represented the Orange County Medical Society for the annual OCMS scholarship presentation. The 2015 recipient is fourth-year Orlando student **Kevin Draper**. Dr. Wilson noted the need for physicians to be involved with legislative matters affecting health care delivery and reconfirmed the OCMS commitment to Orlando campus students and scholarship needs.



Dr. Cecil Wilson presents the OCMS scholarship (Dean Muszynski accepts on behalf of Kevin Draper)

The annual FSU Faculty Council Awards were also presented. **Dr. Samuel Smith of Interlachen Pediatrics** received recognition as the “Outstanding Community Faculty Educator.” Dr. Smith joined the College of Medicine faculty in 2003. He was recognized for consistently demonstrating dedication to principles of the curriculum, for identifying and meeting educational needs of students, and for his enthusiasm for teaching, participation in faculty development, and willingness to

work collaboratively to deliver the clinical curriculum effectively.

The “Guardian of the Mission” was presented to **Dr. Francoeur Cadet**, who demonstrates the College’s mission through his work with the **Healthcare Center for the Homeless**. The award honors the clinical faculty member who has distinguished him/herself by participating in activities that model the mission of the college: to educate and develop exemplary physicians who practice patient-centered health care, discover and advance knowledge, and are responsive to community needs, especially through service to elder, rural, minority, and underserved populations. Dr. Cadet was appointed to the College of Medicine faculty in 2009. Fourth-year student Maxim Olivier delivered earnest remarks about how Dr. Cadet has shaped his view of delivering compassionate, patient-centered medicine.

Orlando campus students received with scholarships made possible through the generous support of local donors. The 2015 scholarship recipients were fourth-year students **Brittany DiFabio, Kathleen Wood, Justin Forde**.



Dean Muszynski and Dean Fogarty presenting the Outstanding Community Faculty Educator award to Dr. Samuel Smith



Dr. Francoeur Cadet receiving the Guardian of the Mission award



Maxim Olivier introducing Dr. Cadet



2015 scholarship recipients Justin Forde, Brittany DiFabio and Kathleen Wood

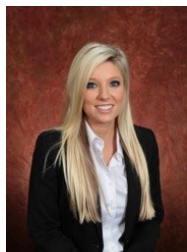
Alpha Omega Alpha and Gold Humanism Honor Society Inductees



GOLD HUMANISM HONOR SOCIETY
THE ARNOLD P. GOLD FOUNDATION



Clinton Dunn



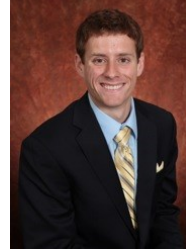
Heather Tramel



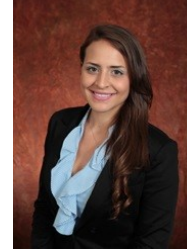
Kathleen Wood



*John-Anthony
Coppola*



Clinton Dunn



Cielo Gnecco

Alpha Omega Alpha (AΩA) is the national medical honor society dedicated to the belief that in the profession of medicine we will improve care for all by recognizing high educational achievement, honoring gifted teaching, encouraging the development of leaders in academia and the community, supporting the ideals of humanism, and promoting service to others. AΩA members meet the highest ideals in the profession of medicine. Nearly 75 percent of deans of U.S. medical schools are members of AΩA, including our regional campus dean.

The Orlando Campus is proud to announce the Class of 2016 students inducted into AΩA this year: Clinton Dunn, Heather Tramel and Kathleen Wood. (For more information about AΩA, please click here.)

Clinton Dunn was honored again, along with John-Anthony Coppola and Cielo Gnecco, as Class of 2016 Gold Humanism Honor Society inductees. The GHHS comprises individuals who have been recognized for practicing patient-centered medical care by modeling the qualities of integrity, excellence, compassion, altruism, respect and empathy. Members may be selected as third- or fourth-year medical students. Residents, faculty and administrators may also be recognized. (For more information about the GHHS, please click here.)

Congratulations to these AΩA and GHHS honorees.

Fourth-Year Student Presents GME Proposal to the FMA

“We believe health care is as important to a community as basketball and water parks,” said Kevin Draper, a fourth-year medical student from the Orlando Campus, while testifying in support of an OCMS resolution to increase funding for Graduate Medical Education at the Florida Medical Association Annual Meeting.

As a student officer on the OCMS executive board, Draper became interested in legislative affairs. After studying the Florida Physician Workforce Analysis, he elected to draft a resolution centered on increasing GME funding by using a percentage of revenue from the tourist tax to fund medical infrastructure on the local level across the state of Florida. His final draft was approved by the OCMS board to be included as a resolution supported by the Central Florida caucus and presented in front of the legislation reference committee at the FMA annual conference.

“I think it’s vital that medical students become involved in organized medicine early on and continue this involvement into residency and beyond,” says Draper. “Active involvement in organizations like the OCMS and the FMA helps to improve upon our position as physicians later in our careers and offers an outlet for physicians to make impactful contributions to the medical community. I was fortunate to be elected to serve as a student representative for the OCMS and even more fortunate that it afforded me the opportunity to lead by example and present a resolution to the FMA. I’m very excited about furthering my involvement.”

The house of delegates has recommended the resolution and the board gave full approval. “Ultimately,” says Draper, “regardless of the eventual outcome of the resolution in the Florida legislative process, it’s been an incredibly positive learning experience for me.”



FSU College of Medicine Alumni Practicing in Central Florida

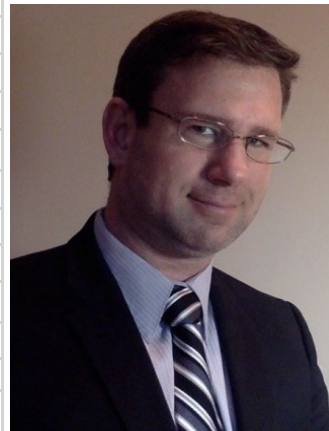
Before the founding of the Florida State University College of Medicine, as many as 40 percent of licensed and practicing physicians in Florida were trained out of state. Florida was facing a shortage of physicians to serve the most pressing needs of its citizens: primary care.

Today, Central Florida residents are benefiting from the community-based model of FSU, which embeds its students in regional campus communities for clinical training. Graduates are now returning to these communities in larger numbers than anticipated. “We knew our educational model would do this, we just didn't know how amazing the results would be,” says Dean Muszynski. The Central Florida region is now home to 40 FSU College of Medicine graduates serving in various areas of primary care and other specialties.

Physician	Specialty	County
Jason R Acosta M.D.*	Anesthesiology	Orange
George Amyradakis M.D.*	Obstetrics-Gynecology	Orange
Jessica Auffant M.D.*	Obstetrics-Gynecology	Orange
Matthew G Buckler M.D.	Radiology-Diagnostic	Orange
Philip J Burke M.D.*	Internal Medicine	Lake
Rachel C Cartechine M.D.	Obstetrics-Gynecology	Orange
Ashley N Cauthen M.D.	Dermatology	Marion
Shani-Kay T Chambers M.D.	Pediatrics	Polk
Jeffrey C Chiu M.D.*	General Surgery	Orange
Kathleen A Crick M.D.	Pediatrics	Orange
Sareh S Dyer M.D.*	Pediatrics	Orange
Jason P Farrah M.D.	General Surgery	Marion
Belinda J Gavino M.D.	Family Medicine	Orange
Tashara N Gray M.D.	Pediatrics	Brevard
Marc F Gutierrez M.D.*	Anesthesiology	Orange
Manny Herrera M.D.*	Obstetrics-Gynecology	Orange
Mary B Hilal M.D.*	Internal Medicine	Orange
Adam W Langley M.D.	Family Medicine	Orange
Brett A Lorenzetti M.D.	Emergency Medicine	Marion
Jennifer L Maziad M.D.*	Anesthesiology	Orange
Amber M McClain M.D.	Pediatrics	Orange
Kevin W McLean M.D.*	Radiology-Diagnostic	Orange
Javier Miller Jr, M.D.*	Urology	Orange
Kyle Moyles M.D.*	Orthopedic Surgery	Brevard
Natalie Munoz-Sievert M.D.*	Obstetrics-Gynecology	Orange
Gina O Nguyen M.D.	Pediatrics	Seminole
Michelle R Norden M.D.*	Pediatrics	Seminole
Chiaka A Oparaocha M.D.	Internal Medicine	Orange
Chandni Patel M.D.	Internal Medicine	Lake
Monica A Pena M.D.	Pediatrics	Brevard
Stephanie S Prada M.D.*	Internal Medicine	Orange
Stephanie A Reed M.D.	Anesthesiology	Orange
Christopher N Rodgers M.D.*	Emergency Medicine	Polk
Elinor A Rodriguez M.D.	Obstetrics-Gynecology	Orange
Regan D Rostorfer M.D.*	Hematology Oncology	Orange
Gary C Visser M.D.*	Family Medicine	Orange
Mai H Vo M.D.	Internal Medicine	Orange
Jill A Ward M.D.*	Emergency Medicine	Orange
Nathan Z Weagraff M.D.*	Emergency Medicine	Orange
Jeremy Williams M.D.*	Emergency Medicine	Polk

* Orlando Regional Campus Graduate

Alumnus Spotlight: Rob Allison, MD, MPH



Orlando Regional Campus Class of 2006

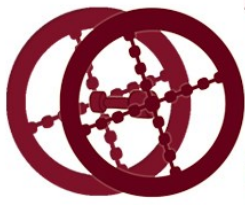
Specialty: Medical Epidemiology and Preventative Medicine

Current practice: Centers for Disease Control and Prevention (CDC), Atlanta, Georgia, and the World Health Organization (WHO)

In his own words: “Attending the FSU College of Medicine, where training in primary care was very strong, has been an advantage in my career. It was an advantage as the head of clinical quality for the Navy’s San Diego regional healthcare system, where I engaged our primary care physicians and clinics to introduce patient-centered medical homes and to improve the quality of services such as diabetes care and cardiovascular disease prevention. It was an advantage as a resident in the primary care-focused Preventive Medicine Residency Program at the Johns Hopkins Bloomberg School of Public Health. And further it has been an advantage in my current position as a CDC medical epidemiologist working with WHO to improve vaccination coverage globally; as vaccination is the most cost-effective form of primary prevention, I’d argue that I started in primary care at FSU and I’ve continued to work in primary care at CDC.”

Dr Allison’s career has focused on infectious disease surveillance and immunization. We are proud of the impacts he has made and will continue to make in the prevention of disease and the alleviation of suffering both at home and around the globe.

Clinical Research Network (CRN) Updates



THE FLORIDA STATE UNIVERSITY COLLEGE OF MEDICINE Clinical Research Network

Improving the health of Floridians through translational science

Current Study Updates

In collaboration with UF's Personalized Medicine Program, data collection for the **Genomics Pain Management Study** began in July. Two CRN family medicine sites are participating in this "proof of concept" study. One of the primary study goals is to evaluate and compare pain management between patients with and without CYP2D6 genotype results. Physicians' perception of the usefulness of having the genotype results available will also be assessed. We anticipate study enrollment to continue through April 2016.

Modifications to the **Tobacco Cessation Protocol** are ongoing. We anticipate receipt of the revised protocol later this year, with site recruitment beginning in 2016.

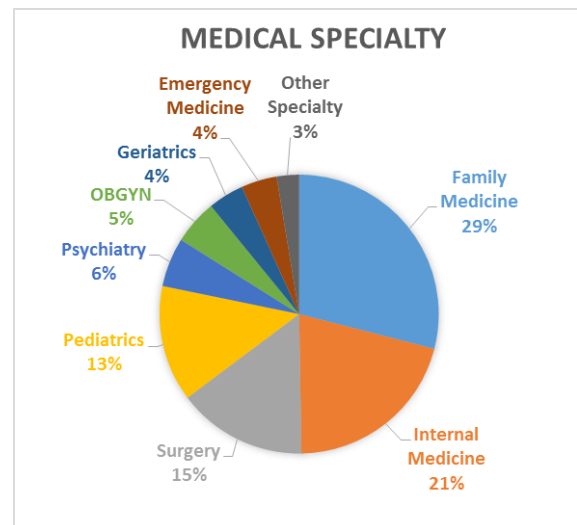
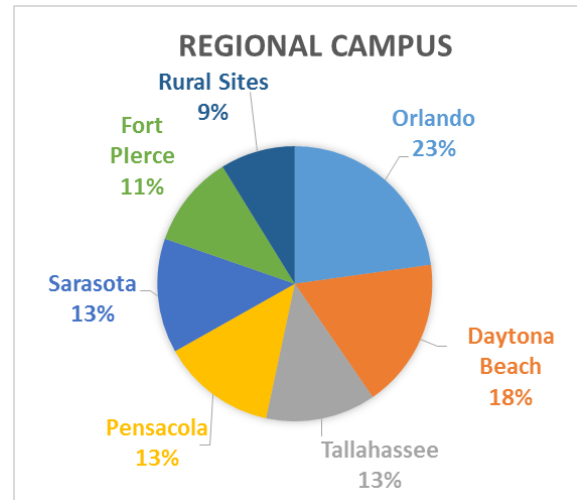
The ACHA-funded pediatric dental care study is anticipated to begin soon. The first year of activity includes a literature review of current screening and intervention practices, using patient and provider focus groups beginning in late 2016. Results from these activities will guide the development of an evidence-based toolkit to be pilot-tested in pediatric practices in 2017.

Practice Structure Questionnaire

Earlier this year, the FSU Clinical Research Network practice structure questionnaire was launched at all College of Medicine regional campuses, and the initial phase is now complete. ***Thank you*** to all practices who expressed an interest in our research network by responding to the survey. Information obtained from this survey is the first step in developing a searchable CRN practice database, which can be used to assist the College of Medicine investigators in strengthening their grant applications and study designs. The information will be used in combination with practice information from other OneFlorida sites to register our PBRN (Practice-Based Research Network) with AHRQ (Agency for Healthcare Research and Quality).

Overall, 193 practice entities responded to the questionnaire. For the purposes of this survey, a practice entity was defined as one practice system, regardless of the number of individual clinic locations. Of those who responded, just over half were categorized as primary care. The distribution of responses was similar at all regional campuses and rural sites. A wide variety of medical specialties were also represented, as shown on the right.

CRN membership recruitment is an ongoing process. If you are interested in joining our network, the practice structure questionnaire can be completed at any time by clicking [here](#). Please send your completed questionnaire to Lori Drum at Lori.drum@med.fsu.edu, or by fax at (407) 835-4107.



OneFlorida Annual Meeting

The **OneFlorida Clinical Research Consortium** is set to hold its 2nd Annual Stakeholder Meeting on Jan. 19-20, 2016, at the Lake Nona UF Research and Academic Center. Attendees will include current academic and health-care partners. Any provider affiliated with the College of Medicine is welcome to attend. The purpose of this meeting is to provide project status updates on OneFlorida research initiatives and discuss marketing and communications strategies. More information regarding the OneFlorida initiative can be found at www.onefloridaconsortium.org.